

**DRAKE  
INTERPLANETARY**

**VULTURE**



**YOUR SHIP  
YOUR SKY**





Freedom and equality, no matter who you are or where you're from. The ability to achieve your potential on your own terms. These tenets, and the rogue spirit of freedom, are what come to mind when I think of Drake Interplanetary. And that's what excites me most about the amazing opportunity I've been given in leading the new vision of this storied company. I see potential. The potential to do better.

From its inception, Drake has been about people. The hard-working men and women of the UEE. For the first new model under my watch, I want to embrace that legacy. So we looked to you, the pilots, for inspiration. The result is the all-new Vulture.

The Vulture embodies the spirit of innovation in the face of seemingly insurmountable adversity through hard, honest work. The spirit of perseverance when the situation seems most dire. The spirit of the people. We here at Drake are proud of the ship, and you should be too. You helped make it.

We look forward to helping you achieve your potential. Help us do the same.

Here's to YOU,

**Anden Arden**  
CEO, Drake Interplanetary



# THE OPEN SKY CALLS



There's a certain beauty to the silent serenity of a ship graveyard.  
A calm comfort in a wreck suspended in the most secluded corner of the void.

# A LONE WOLF

Strap in and set off - you're a wrecking crew of one.

In a Vulture, everything is at your fingertips. We applied months of consumer feedback to bring you our most intuitive control system yet.

Who needs a crew or a cumbersome rig when you can do it yourself in half the time? And come on, who doesn't dream about being their own boss? You're in complete control of navigation, defense, weapons, and the Vulture's unique all-in-one utility arrangement.

# TOOLS OF THE TRADE

Dual integrated scraper beams use Drake's patented Tomium system, developed with professional salvagers for the ultimate in speed and efficiency.

With maximum visibility and vital ship systems at your fingertips, the Vulture puts you in command of any situation and ensures you're ready for anything.

The Ripper's claw is outfitted with an integrated Lariat tractor rig, designed specifically for the Vulture. This industrial grade tractor's innovative proprietary beam configuration makes it more powerful than setups three times its size.

# YOUR SKY, YOUR RULES

Push the limits wherever you roam. Following the spirit of the lone wolf can lead to treacherous ends, but it can just as readily lead to outrageous fortune. The Vulture is a ship for those willing venture forth where others have failed.

Be fearless with the comfort of a class-leading safety rating, industry standard defense & weapon systems, and the rugged dependability Drake is famous for.



# LONG HAULS & CLOSE CALLS

When you embrace the lone wolf spirit, you often find yourself traversing the outermost reaches of civilized space, and sometimes even farther off the proverbial grid than that. The Vulture eases the pain of lengthy travel, and the frequent dangers associated therewith, by providing a versatile combination of comfort and convenience.

When the going gets rough, you're never more than a skip and a stumble away from the cockpit and command station. Talk about a painless commute.

The Vulture's deceptively spacious interior bay can be anything you need it to be, from extra cargo space to your personal sanctuary of solitude, and all points in between.

A full-size bunk employs a new composite mattress developed and tested by professional salvagers and haulers right here at Drake.

# CUT OUT THE MIDDLEMAN

In a Vulture, you're truly the model of self-sufficiency. No more paying couriers, crew members, choppers, or haulers. Put the weight on your shoulders and profit in your pocket.

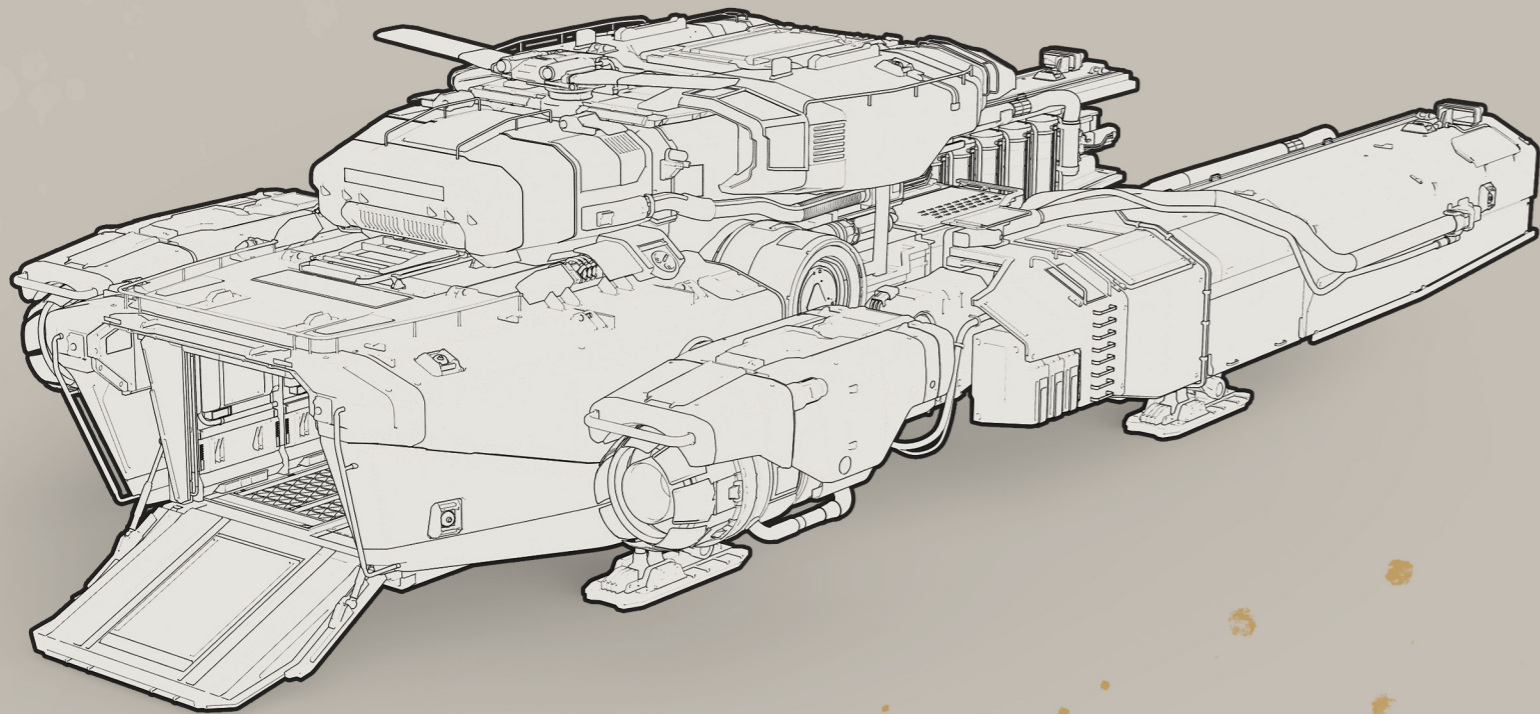
12 SCU of cargo space means you never have to worry about capacity.

The Vulture features a super-compact onboard processor capable of separating and prepping raw salvaged materials.

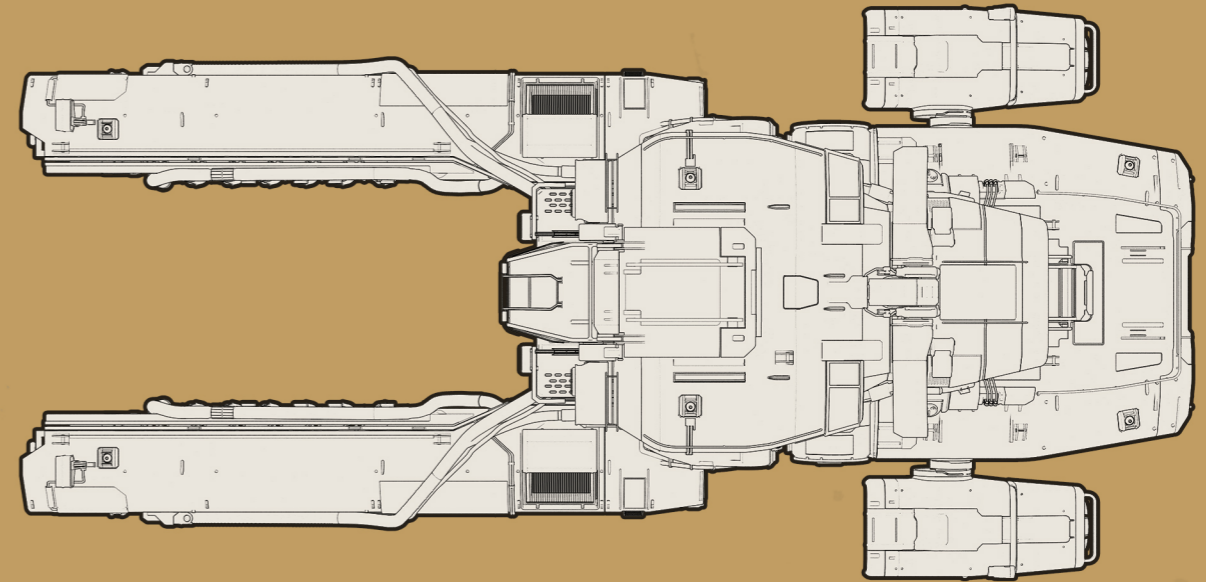
The extra-wide rear hatch makes quick loading and unloading a breeze. Get in, load out, and move onto the next gig.



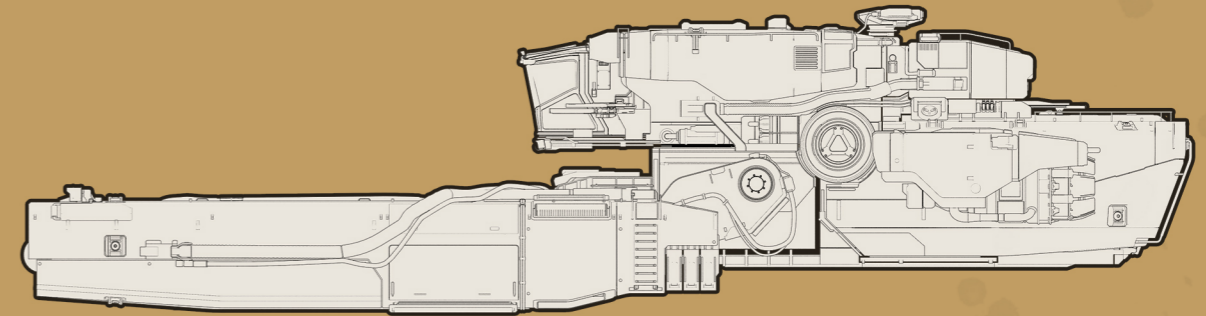
<b>LENGTH</b>	33m	<b>ARMOR</b>	Medium
<b>WIDTH</b>	16m	<b>LIFE SUPPORT</b>	1x S1
<b>HEIGHT</b>	9m	<b>WEAPONS</b>	2x S1
<b>MASS</b>	114,591kg	<b>COUNTER MEASURES</b>	16x Flare 16x Chaff
<b>FLIGHT SPEED</b>	165 m/s	<b>TOOLS</b>	1x S2 Tractor Beam
<b>SEATS (STATIONS )</b>	1		1x S2 Scraper Beam
<b>CARGO CAPACITY</b>	12 SCU		



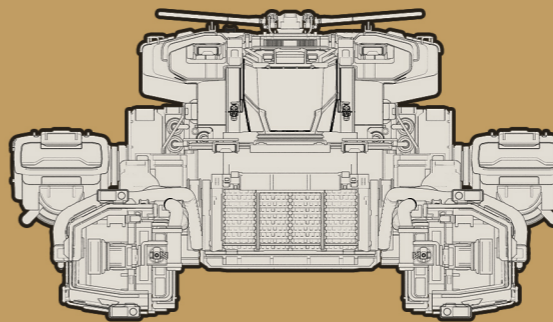
&gt;&gt; DORSAL



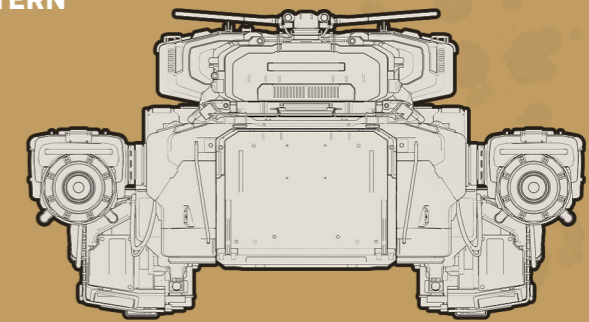
&gt;&gt; LATERAL



&gt;&gt; BOW



&gt;&gt; STERN



# DRAKIE INTERPLANETARY

The models featured in this publication are approved for use in the UEE. Some items of equipment are available as extra-cost options only. Specifications correct at date of publish. For information on standard and optional equipment, please consult your local Dealer. Specifications, features and appearance are subject to revision during development.

© 2018 Cloud Imperium Rights LLC and Cloud Imperium Rights Ltd.  
Star Citizen® and Roberts Space Industries® are registered trademarks of Cloud Imperium Rights LLC