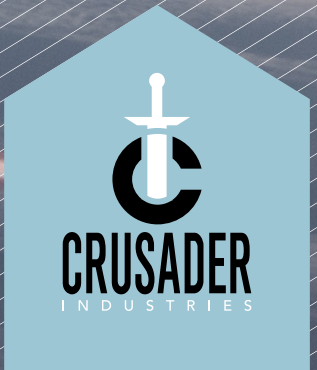





# HERCULES STARLIFTER



# DEFINING/ DEFYING CLASS

Crusader Industries proudly presents the Hercules, our standard-setting, all-purpose tactical starlifter chassis. The original M2 was designed as a protean vehicle transport craft to support strategic lift and landing operations, as evidenced by its ubiquity throughout the UEE military forces, but the versatile frame has found cause in a variety of alternative applications. From airborne assaults to supply drops, the Hercules excels. As the premier ship in its class, it sets the standard for galactic transport on a massive scale.

The A2 gunship shows off its variable payloads. 



A cadre of gunships bring supplies, vehicles, and superior firepower to a humanitarian aid effort on Charon III.

## ONE CRAFT, ANY MISSION

The Hercules has played a role in numerous military, civilian, and humanitarian aid operations, and the ship is becoming increasingly popular for commercial use. Classic Crusader design and performance, utilitarian and stout, yet agile and adaptable, have put the Hercules family of ships in a class all their own, and because of this, there's almost nothing they haven't faced, and no situation they can't handle. From simple cargo runs to patrol missions, reconnaissance and offensive support, from transporting supplies to those who need them most, to bringing loved ones home. The Hercules has been there, and completed the mission.

The M2 and C2 exhibit their VTOL thruster tech. With the Hercules, even the most volatile landing zones are fair game.



## M2 STEADFAST STANDARD

For years the M2 has been the gold standard in strategic and tactical starlifts throughout the UEE. The ship's ability to transport vehicles, including small ships, as well as cargo and supplies, makes the Hercules invaluable to many different types of operations, and it continues to be employed by every branch of the military. Its potent combination of capacity, maneuverability, and durability make it the obvious choice in large-scale transport, and a robust weapons package assures your cargo, and personnel, gets to where they're going in one piece.



## VARIANT SPECS

### Vertical Thrust

Takeoffs and landings are a breeze under any circumstances, even in unorthodox landing zones, thanks to Crusader's award-winning VTOL thruster technology.

### Offensive Assurance

With three remote turrets, two front-mounted ballistic cannons, and heavy armor the M2 packs a wallop and keeps your cargo safe, thriving in the face of fierce opposition.

### More Space, More Possibilities

With a whopping 468 SCU capacity, and the ability to accommodate small ships, bikes, and medium to heavy ground vehicles, the adaptably configurable cargo bay is perfectly suited to almost any conceivable payload.

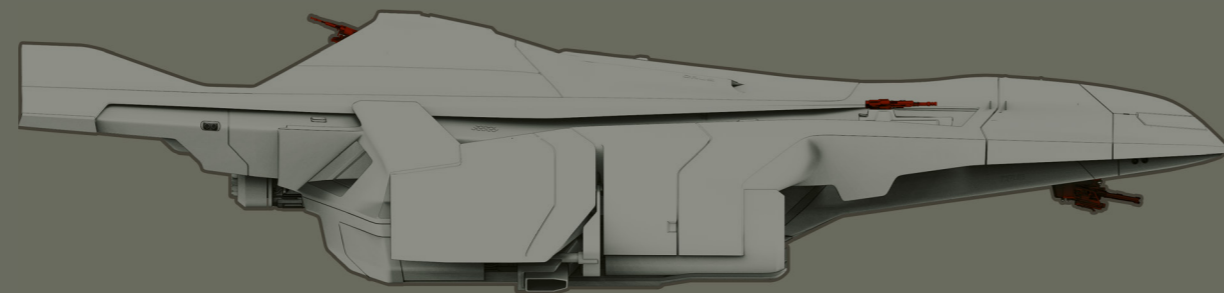


The M2's bridge is thoughtfully designed to be intuitive, adaptable, and above all, comfortable.

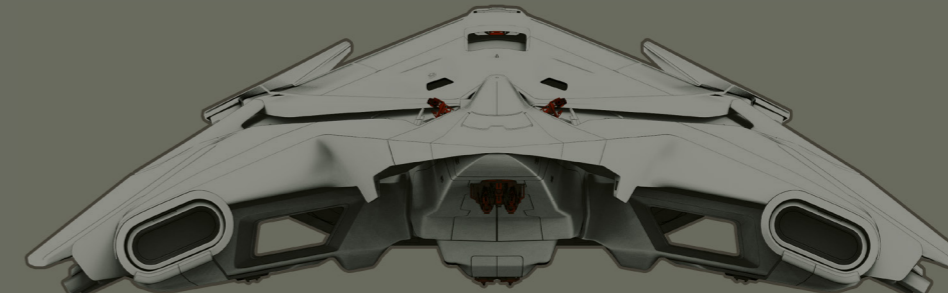
# VARIANT SCHEMATIC

LENGTH	94m
WIDTH	70m
HEIGHT	23m
SEATS (STATIONS)	3 (3)
ARMOR	Heavy
COMPUTERS	1
CARGO CAPACITY	468 SCU
WEAPONS	2x S4 front fixed ballistic cannons
TURRETS	3x remote turrets with 2x S3 guns each

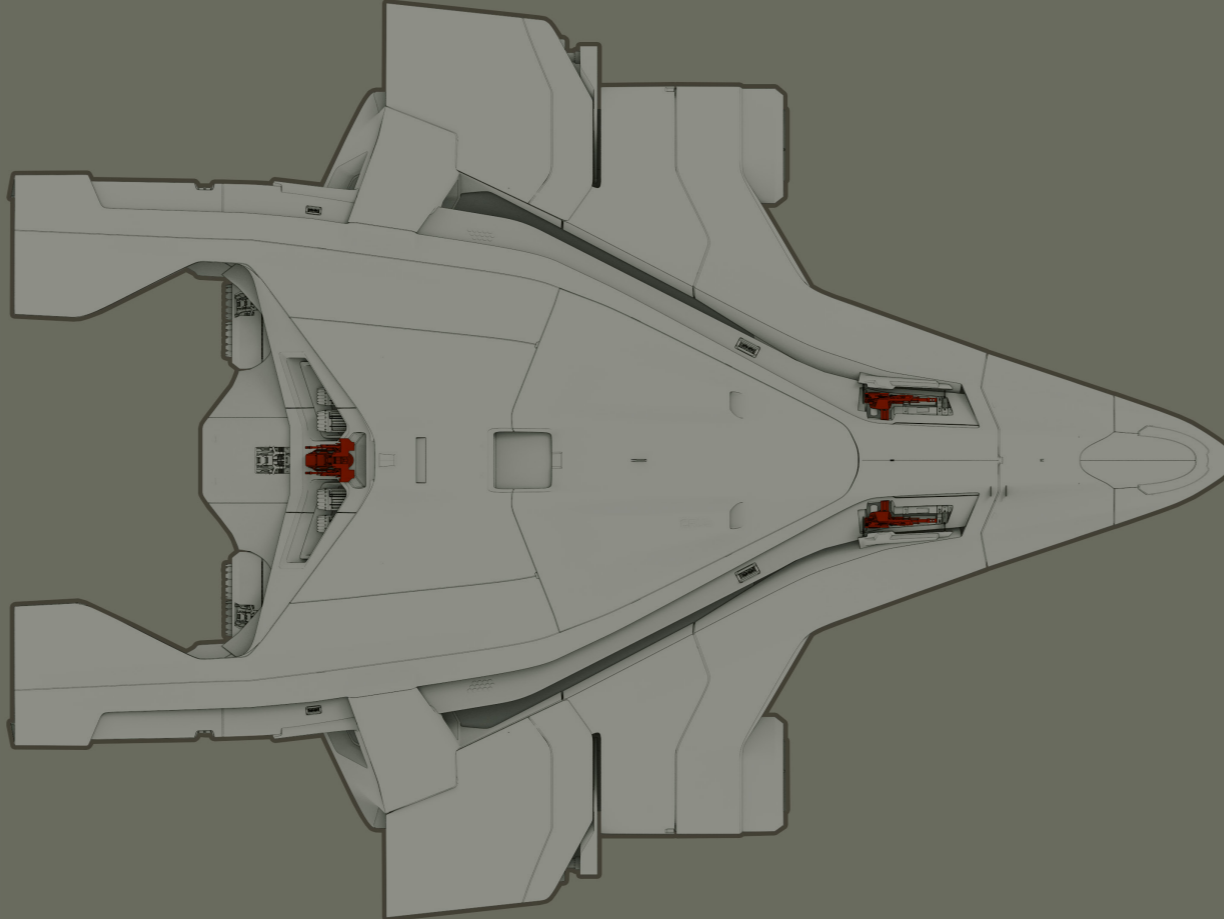
Lateral



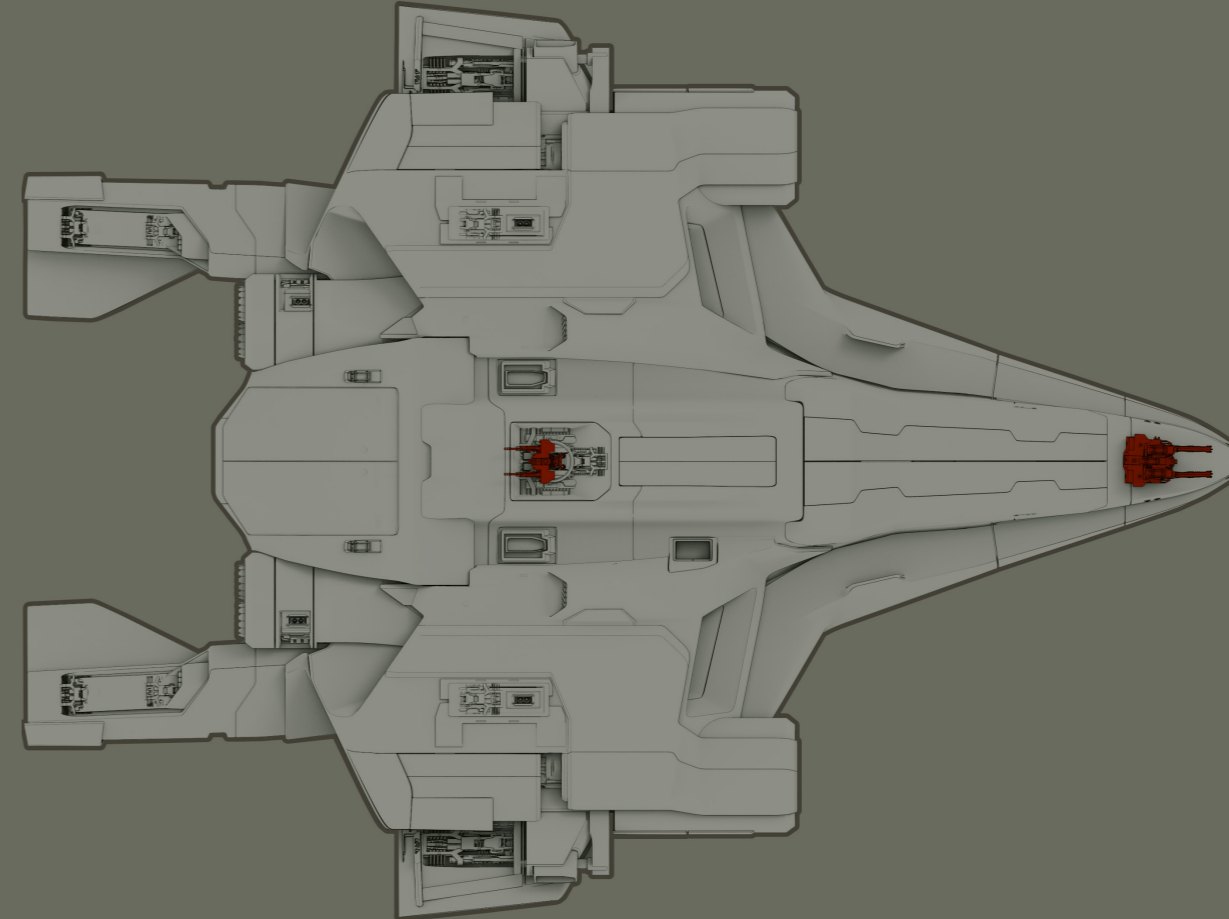
Bow



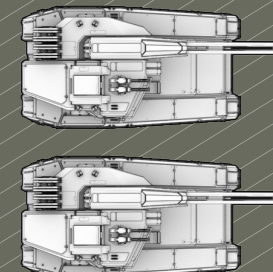
Dorsal



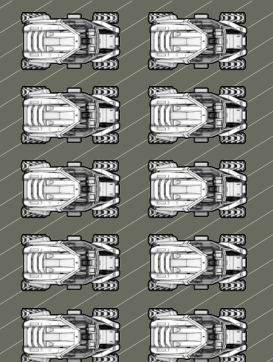
Ventral



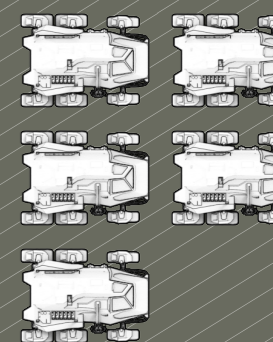
Cargo Config 1



Cargo Config 2



Cargo Config 3



A2s perform an aerial assault, utilizing the patented DAISY CHAIN rig to carpet bomb an enemy target.

## A2 WHEN THE GOING GETS TOUGH

If the job simply calls for more firepower, the A2 is your go-to warhorse. Outfitted with additional remote turrets, and ballistic cannons, and a devastating bomb system, no situation is too dire for the Hercules gunship. Excelling in calamitous conditions, the A2 has been integral to search and rescue operations and humanitarian aid initiatives in extremely rough territory. It also caters well to those hauling massive amounts of cargo through potentially unfriendly skies.

## VARIANT SPECS

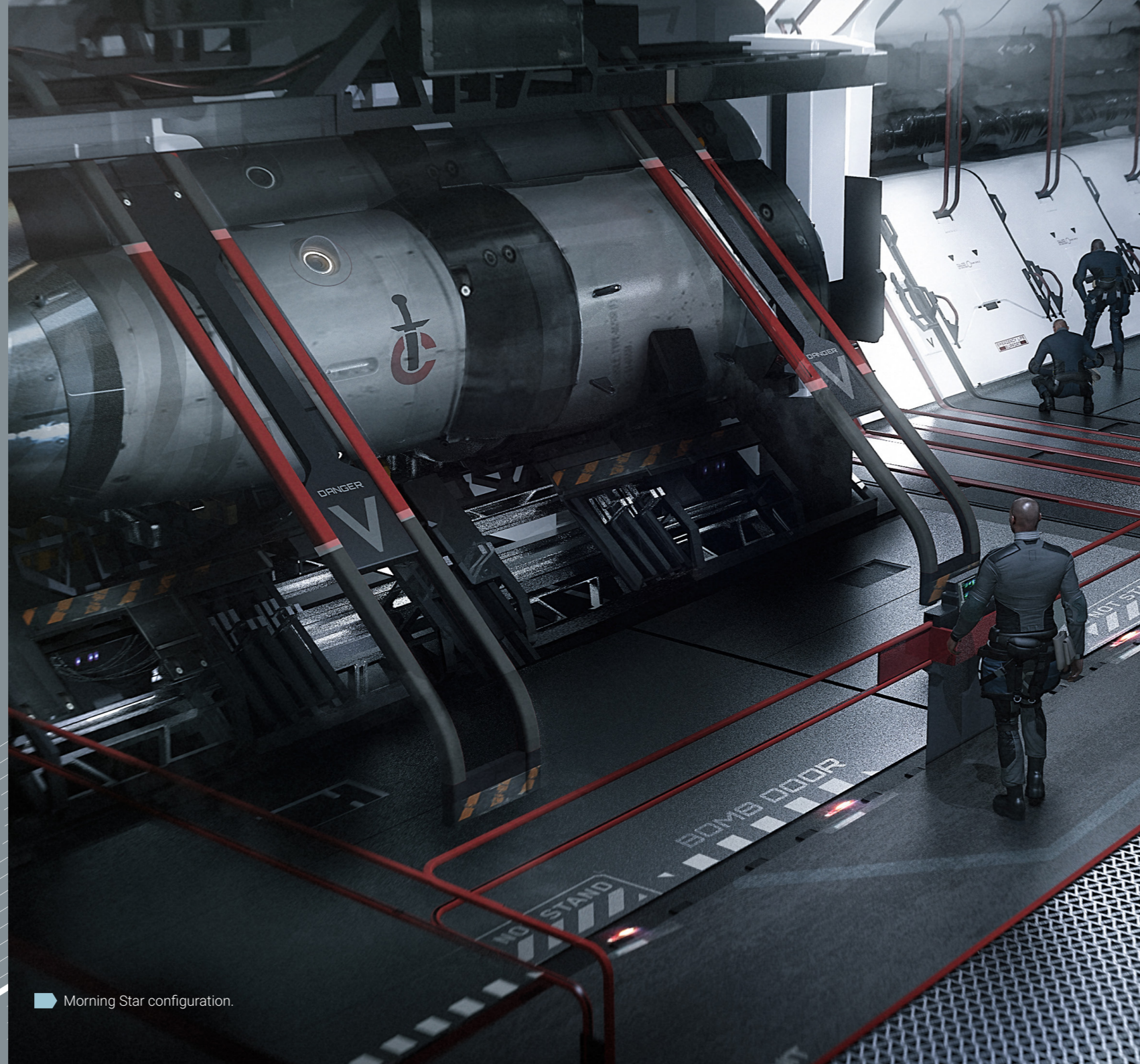
### Amplified Ordnance

Adding two side-mounted remote turrets, and two more ballistic cannons to the already stout standard loadout, the A2 is capable of relentless and devastating shows of force. The expanded armaments also mean that wherever you land it, the A2 ostensibly becomes a mobile fortress.

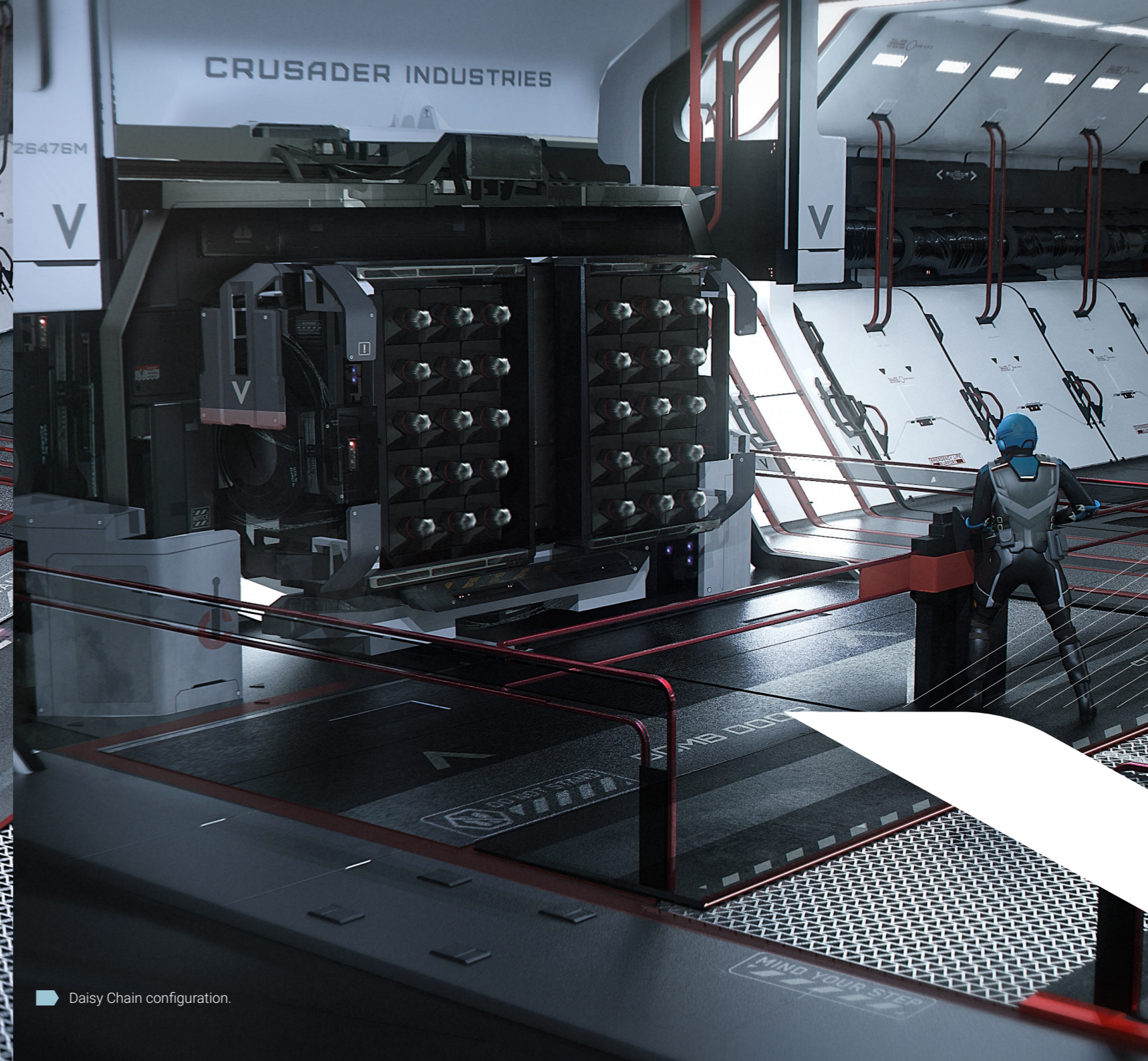
### Bomb System

The A2 replaces the standard rear cargo ramp with a custom bomb bay, adding even more firepower to an already impressive package. The system allows for two distinct load-outs, enabling adaptable aerial bombardment as the situation requires.

- **MORNING STAR** Massive Ordnance rig  
Rack capacity of 4 large yield aerial bombs
- **DAISY CHAIN** saturation rig  
Rack capacity of 60 compact aerial bombs



Morning Star configuration.



Daisy Chain configuration.



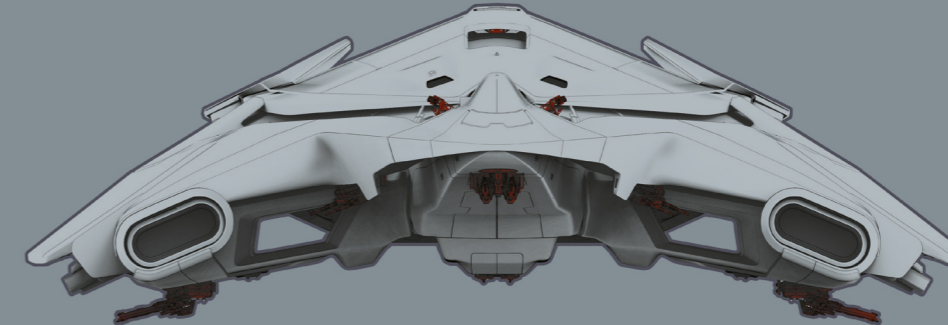
# VARIANT SCHEMATIC

LENGTH	94m
WIDTH	70m
HEIGHT	23m
SEATS (STATIONS)	3 (8 including 5 stations in the rear)
ARMOR	Heavy
COMPUTERS	2
CARGO CAPACITY	234 SCU
WEAPONS	2x S4 front fixed ballistic cannons 2x S5 remote side ballistic cannons
BOMBS	Either 60x S3 bombs or 4x S10 bombs
TURRETS	3x remote turrets with 2x S3 guns each 2x remote side turrets with 2x S4 ballistic Gatlings

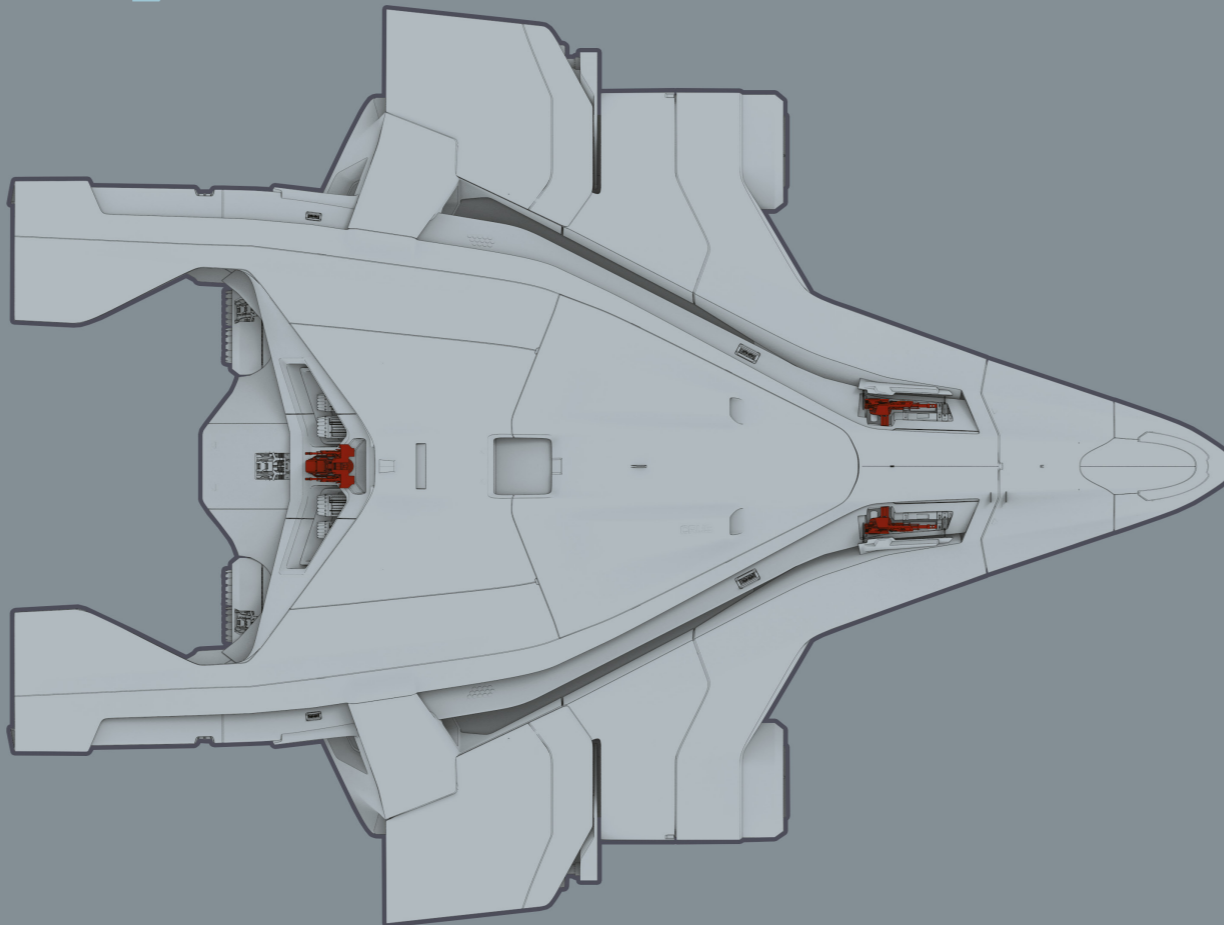
Lateral



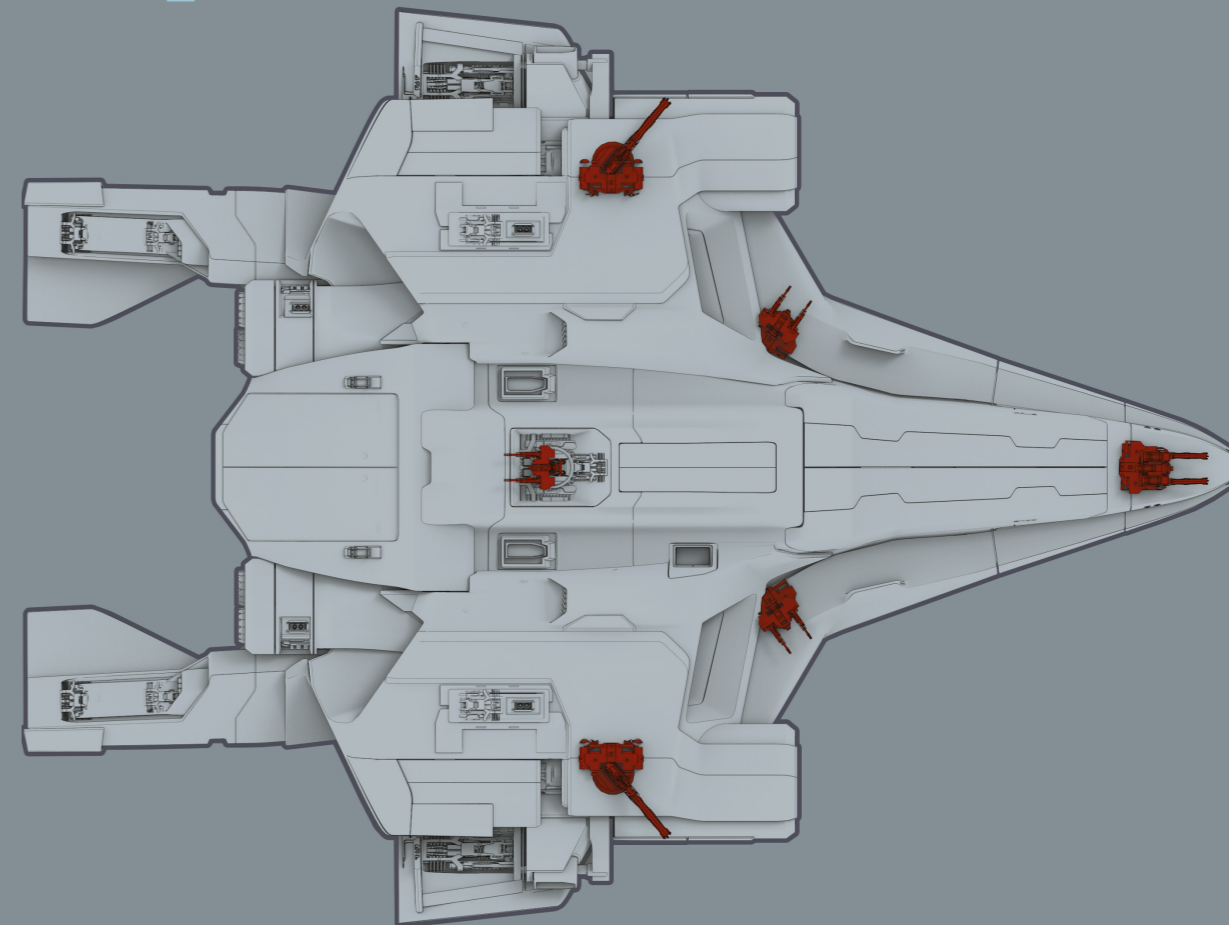
Bow



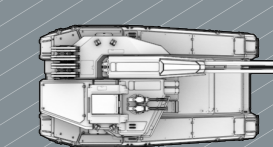
Dorsal



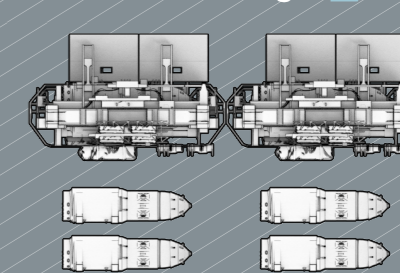
Ventral



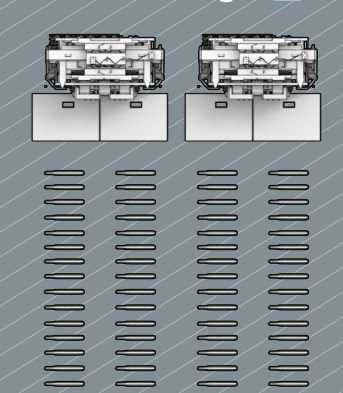
Cargo Config 1



Bomb Config 1



Bomb Config 2



A C2 deploys ground vehicles and freight, betraying the massive capacity of its cargo bay.



## C2 MASSIVE TRANSIT

Crusader has made a huge impact on the civilian market with the C2, which has become an industry standard for racing teams, ship dealers and manufacturers, construction orgs, mining corporations, and even large-scale touring entertainment outfits. Utilizing the patented Hercules military-grade frame and expanding cargo capacity, while sacrificing barely any firepower, it's easy to see why the C2 has taken the private sector by storm.

## VARIANT SPECS

### ► Mil-Spec Spaceframe

The C2 utilizes the battle-tested Hercules frame, customizing it specifically for the civilian market. Your crew can ride easy in knowing that they're supported by the same stalwart engineering trusted by the military for decades.

### ► Lighter and Faster

Lighter armor gives the C2 a speed boost, making it the fastest ship in the Hercules family, and assuring timely landings and drops.

### ► Bigger and Better

An expanded cargo bay adds over 150 SCU in additional capacity, allowing for nearly limitless freight configurations.

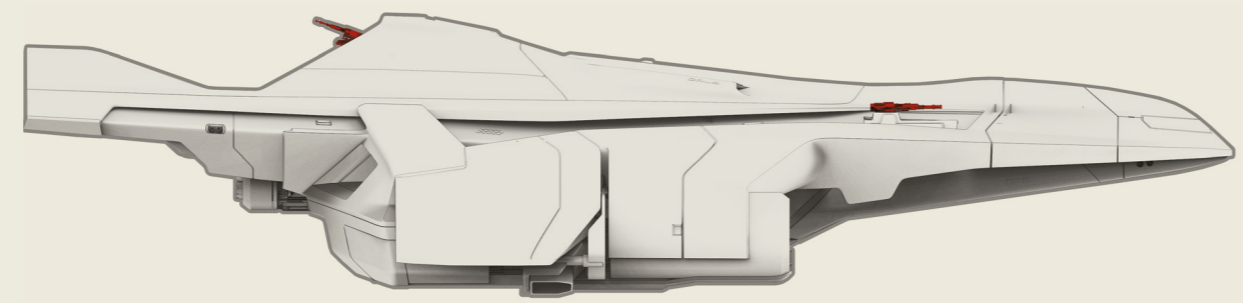


► An interior view shows the cavernous majesty of the C2 hold.

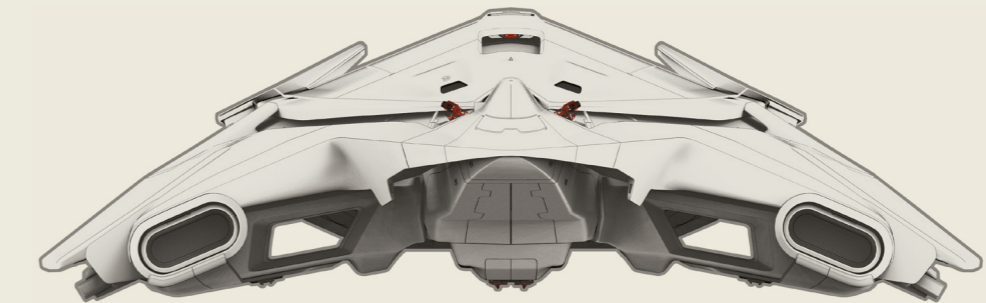
# VARIANT SCHEMATIC

LENGTH	94m
WIDTH	70m
HEIGHT	23m
SEATS (STATIONS)	2 (2)
ARMOR	Medium
COMPUTERS	1
CARGO CAPACITY	624 SCU
WEAPONS	2x S4 front fixed ballistic cannons
TURRETS	2x remote turrets with 2x S3 guns each

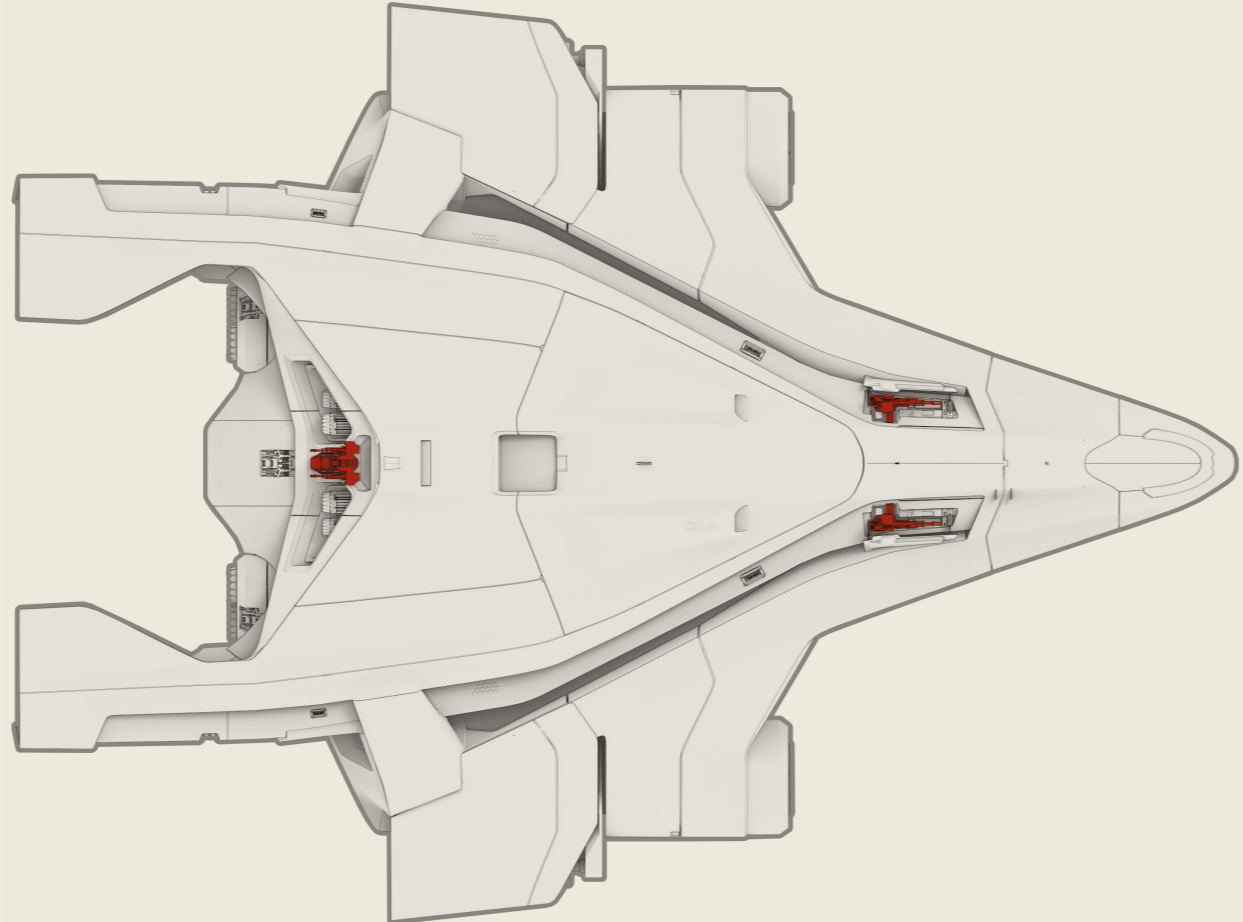
Lateral



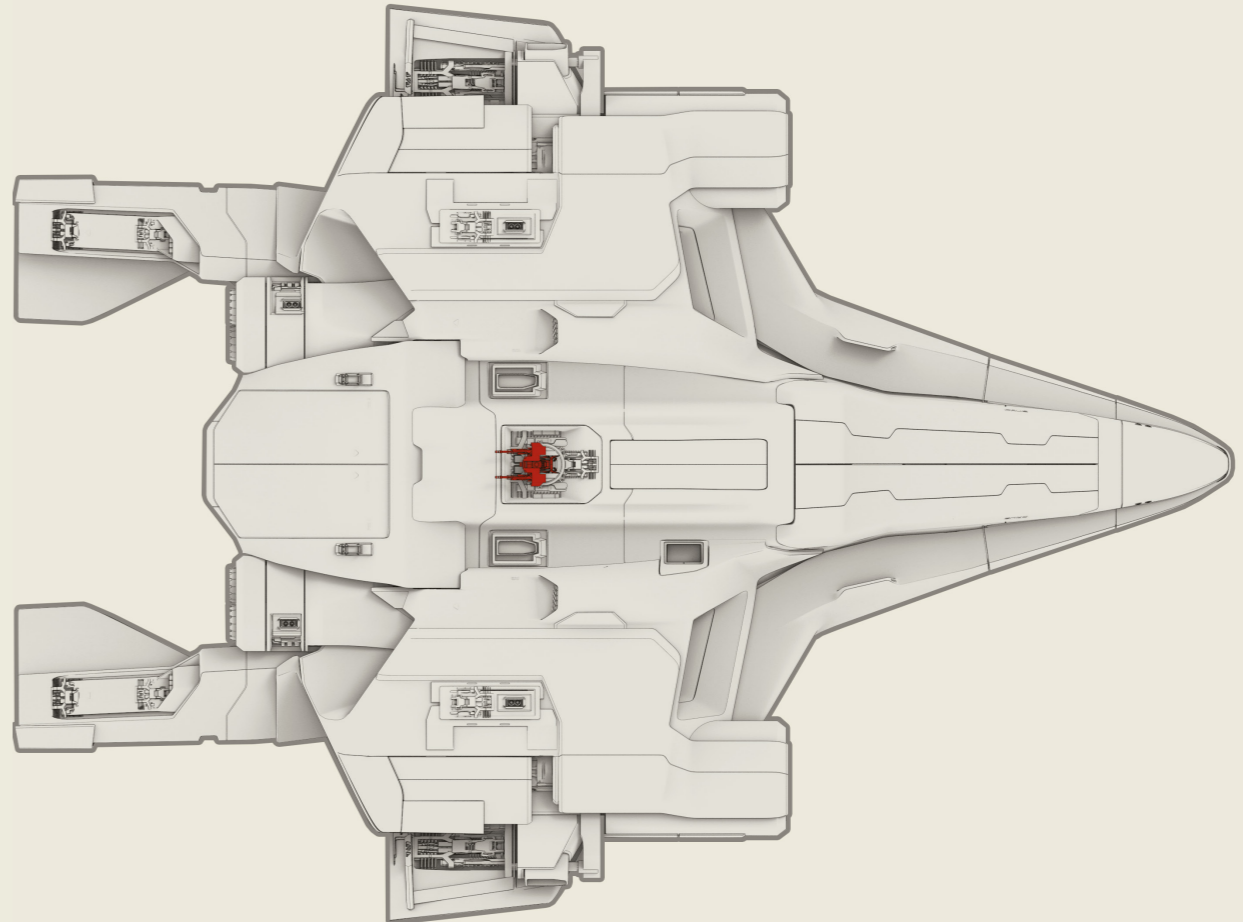
Bow



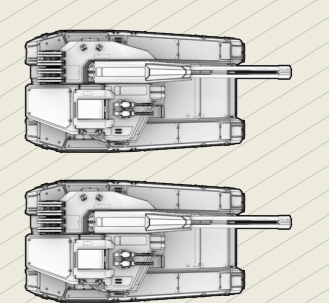
Dorsal



Ventral



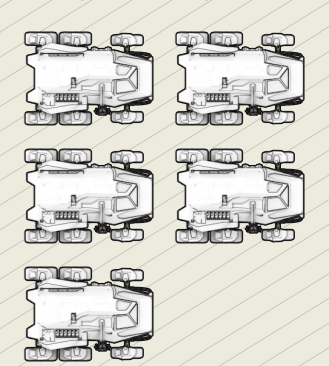
Cargo Config 1



Cargo Config 2



Cargo Config 3





# CRUSADER

I N D U S T R I E S

The models featured in this publication are approved for use in the UEE. Some items of equipment are available as extra-cost options only. Specifications correct at date of publish. For information on standard and optional equipment, please consult your local Dealer.  
Specifications, features and appearance are subject to revision during development.