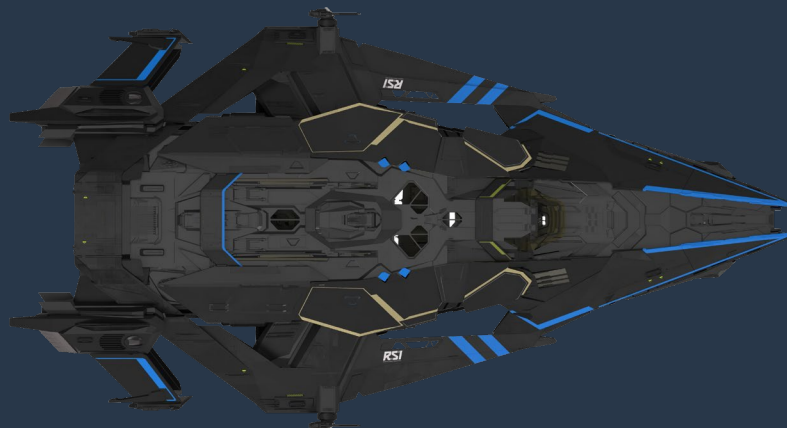
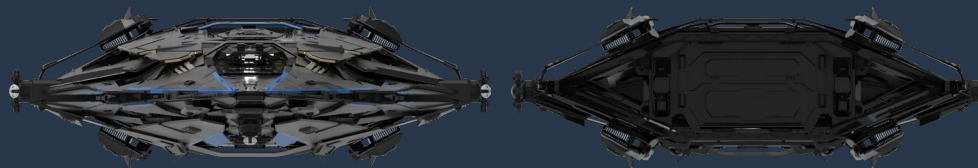


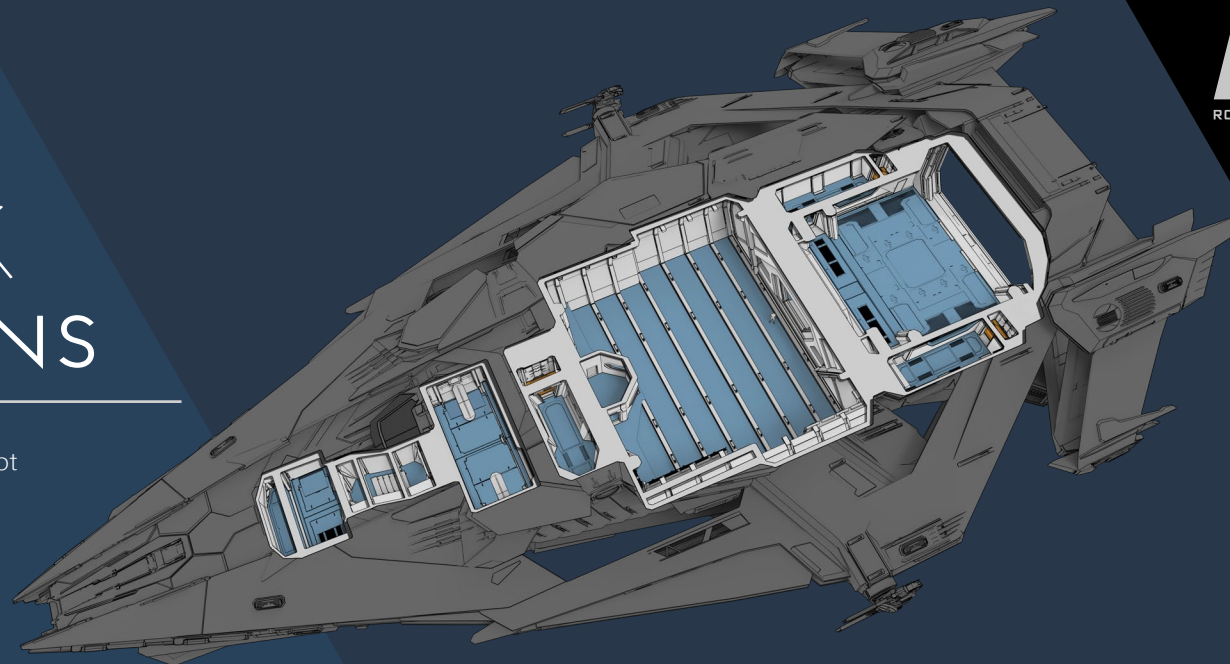
# GALAXY SPECIFICATIONS

<b>ROLE</b>	MULTI-ROLE
<b>CREW</b>	6
<b>DIMENSIONS</b>	LENGTH 110 M WIDTH 60 M HEIGHT 22 M
<b>SCM SPEED</b>	TBC M/S
<b>CARGO CAPACITY</b>	64 SCU
<b>POWER PLANT</b>	2X S3
<b>QUANTUM DRIVE</b>	1X S3
<b>JUMP DRIVE</b>	1X S3
<b>THRUSTERS</b>	4X MAIN 2X RETRO 12X MAV
<b>QUANTUM FUEL TANK</b>	1X S3
<b>FUEL TANKS</b>	2X S3
<b>SHIELD GENERATOR</b>	1X S3
<b>COOLERS</b>	2X S3
<b>GRAVITY GENERATOR</b>	1X S3
<b>FUEL INTAKES</b>	1X S3
<b>BATTERY</b>	2X S3
<b>LIFE SUPPORT</b>	1X S3
<b>COMPUTERS</b>	2X S2
<b>RADAR</b>	1X S3
<b>TURRETS</b>	3X REMOTE TURRETS: 2X S5
<b>MISSILES</b>	2X MISSILE LAUNCHERS: S4 (4XS2 MISSILES)
<b>OTHER</b>	MODULAR WAIST DECK

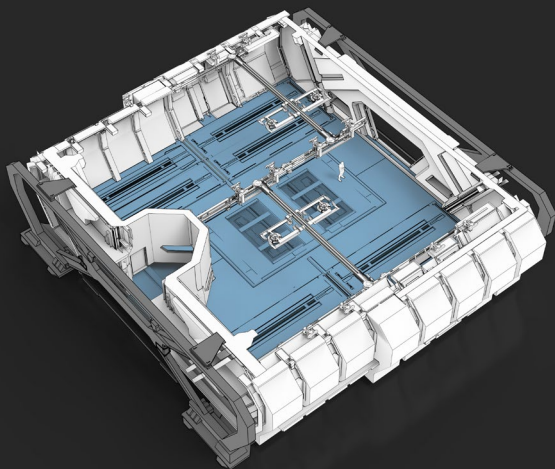


# MODULAR WAIST DECK CONFIGURATIONS

The heart of the Galaxy, RSI's versatile modular concept enables it to be configured for a specific role, with the abilities of a dedicated career ship. Three modules are currently available, with more in the works.



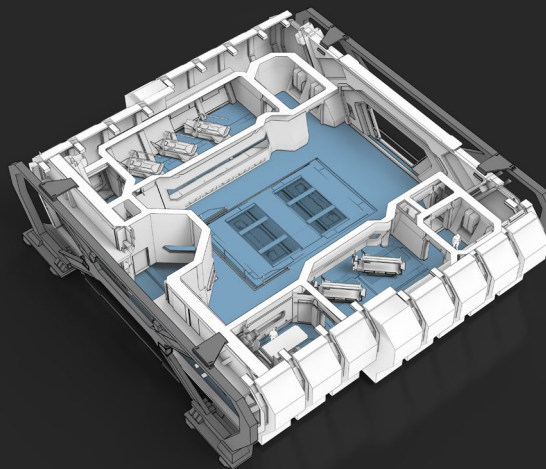
## CARGO



Turn your Galaxy into a professional-grade hauler with the 512 SCU cargo module.

**Cargo Capacity:** 512 SCU

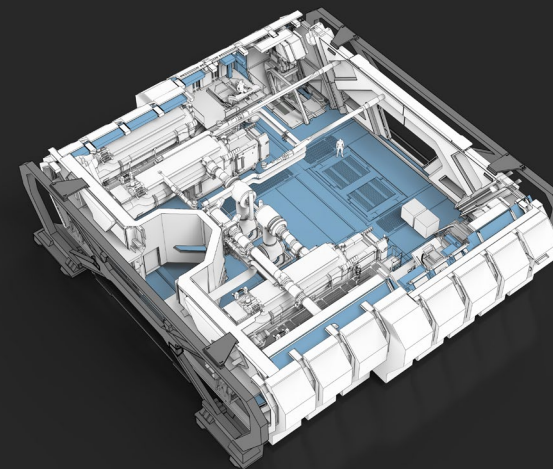
## MED BAY



Operate a mobile medical center with top-flight facilities that you can customize to the needs of your practice or the mission at hand.

**Medical beds:** 1x tier /2x tier 2/3x tier 3

## REFINERY



Bolster any industrial operation or spearhead your own with the heavy-duty refinery module.

**Refinery System:** 2x Refinery Reactors